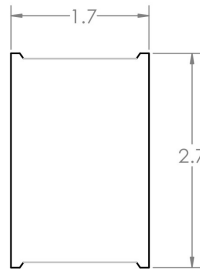


Ring 2in

The modern day delivery system for a very wide variety of direct and indirect illumination packages, Fluent Lighting can provide all the lighting you want and need. The Vertical Ring 2x3 has a full range of diameters including 2', 3', 4', 5', 6.5', 8', 10', 13', and 16' and lumen packages ranging from 3100lm to over 56,000lm. Please let Fluent Lighting know how we can help make your next project perfect.



SECTION VIEW



SPECIFICATION CODE

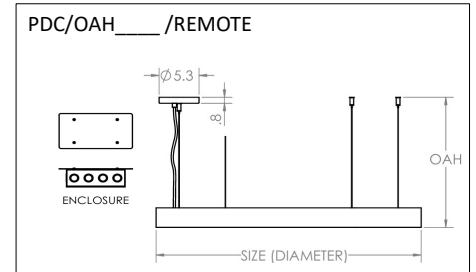
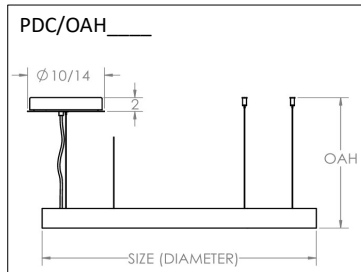
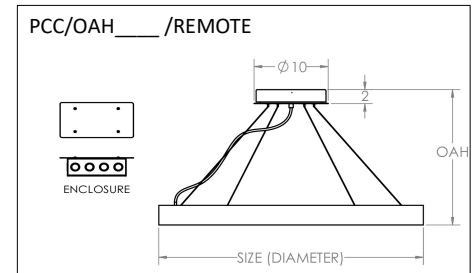
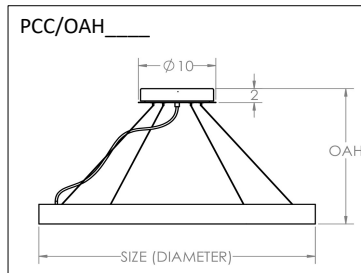
MODEL/DISTRIBUTION	SIZE (in)	LIGHT SOURCE (direct/indirect)	VOLTAGE	CCT (K)	CRI	CONTROL	MOUNTING	FINISH	OPTIONS

EXAMPLE

PVR2	35	DIR M 43W / IND H 59W	120-277	3500	90	DIM5	SCC/OAH96/REMOTE	RAL7035	
PVR2 (metal ring with up light and down light, separate circuit)	24	IND L 18W (1550lm, 250lm/ft) IND M 30W (2500lm, 400lm/ft) IND H 41W (3450lm, 550lm/ft) DIR L 18W (1550lm, 250lm/ft) DIR M 30W (2500lm, 400lm/ft) DIR H 41W (3450lm, 550lm/ft)	120-277	2700 3000 3500 4000 5000	80 (min) 90 (min)	DIM5 (0-10V, 5%) DIM1 (0-10V, 1%) PDIM1 (ELV/TRIAC, 1%)	PCC/OAH _____ (cable suspension with central canopy, pick OAH, white power cord, integral power supply) *ONLY AVAILABLE FOR SIZES 24, 35, 47, 59 PDC/OAH _____ (direct cable suspension, pick OAH, white power cord, integral power supply) PCC/OAH _____/REMOTE (cable suspension with central canopy, pick OAH, white power cord, remote power supply, enclosure included) *ONLY AVAILABLE FOR SIZES 24, 35, 47, 59 PDC/OAH _____/REMOTE (direct cable suspension, pick OAH, white power cord, remote power supply, enclosure included)	WHT (RAL9010 textured) BLK (RAL9005 textured) RAL _____ (pick color)	MOD _____ (modification to standard product, feasibility to be verified by factory)

RAL
(pick any color from the RAL color standard, finish will be fine textured unless otherwise)

OAH: 48, 96, 144
(inches, fixture supplied with the above OAH and is field adjustable)



GENERAL SPECIFICATIONS

APPROVAL	ETL listed to UL1598/UL2108 damp location
MIN OPERATING TEMP	-20C (-4F)
MAX OPERATIONG TEMP	40C (104F)
HOUSING MATERIAL	extruded aluminum
DIFFUSER MATERIAL	UV resistant textured polycarbonate
SUSP. CABLE MATERIAL	galvanized steel
FINISH MATERIAL	polyester powder coat
LUMEN MAINTENANCE	L70 > 50,000 hrs. (@25°C)
WARRANTY	5 year limited warranty

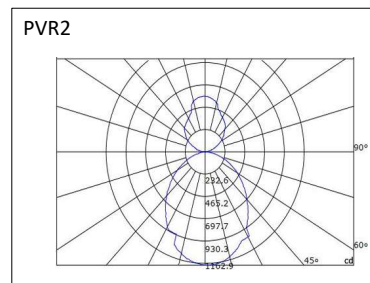
LIGHT SOURCE / PHOTOMETRY

LEDs	Samsung 2835
CCT	2700K, 3000K, 3500K, 4000K, 5000K
COLOR BINNING	within 6-step MacAdam ellipse
CRI	80+ (Ra>80, 25>R9>0), 90+ (Ra>90, 75>R9>50)
LUMEN MAINTENANCE	L70 > 50,000 hrs. (@25°C)

AVAILABLE IES FILES www.fluent-lighting.com

OUTPUT MULTIPLIER Lumen values and photometric files created at 3000K, 90 CRI. Please use the following multipliers for different color temperatures and CRI values.

	2700K	3000K	3500K	4000K	5000K
80+	1.15	1.22	1.02	1.03	1.10
90+	.95	1.00	1.01	1.02	1.07



CONTROL

DIM5 (0-10V dimming, 5%)		DIM1 (0-10V dimming, 1%)		PDIM1 (ELV/TRIAC phase dim, 1%)	
TYPE	electronic	TYPE	electronic	TYPE	electronic
DIMMING PROTOCOL	0-10V	DIMMING PROTOCOL	0-10V	DIMMING PROTOCOL	ELV and TRIAC phase dimming
MINIMUM DIM LEVEL	5%	MINIMUM DIM LEVEL	1%	MINIMUM DIM LEVEL	1%
DIMMING CURVE	linear	DIMMING CURVE	linear	DIMMING CURVE	linear
POWER FACTOR	>0.9	POWER FACTOR	>0.9	POWER FACTOR	>0.9
THD	<20%	THD	<20%	THD	<20%
INPUT	120-277V AC, 50/60HZ	INPUT	120-277V AC, 50/60HZ	INPUT	120-277V AC, 50/60HZ
REMOTE DISTANCES	Specific to each lamping/driver combination and can be 100'+, consult factory for specifics.				
	Worst case distance: 18ga wire - 15', 16ga wire - 25', 14ga wire - 40', 12ga wire - 60'				
MAINTENANCE	All drivers are field replaceable.				
ALTERNATIVE CONTROLS	Contact factory for additional control options.				

MOUNTING

PCC (ANGLED CABLES WITH CENTRAL CANOPY) MOUNTING DETAILS

SIZE (in)	WEIGHT	HANGING CABLES	CORDS	DRIVERS	MINIMUM OAH	CANOPY DIMENSIONS	REMOTE ENCLOSURES (REMOTE DRIVER OPTION)
24	15 LBS	3	1	2	10"	10" DIAMETER X 2" HIGH	1
35	21 LBS	4	1	2	16"	10" DIAMETER X 2" HIGH	1
47	27 LBS	4	1	4	22"	14" DIAMETER X 2" HIGH	2
59	33 LBS	4	1	4	28"	14" DIAMETER X 2" HIGH	2

NOTES Central canopy mounts over 4x4 octagonal j-box (by others.) Mounting bracket to be secured to structure independent of the j-box. Cord is white. Cable and cords are field cuttable to adjust OAH. Remote enclosure: contact factory for sizes and options

PDC (STRAIGHT CABLES) MOUNTING DETAILS

SIZE (in)	WEIGHT	HANGING CABLES / CABLE MOUNTING CIRCLE	CORDS	DRIVERS	HOUSING SECTIONS PER RING	CANOPY DIMENSIONS (INTEGRAL DRIVERS)	REMOTE ENCLOSURES (REMOTE DRIVER OPTION)
24	15 LBS	3 / 22.0"	1	2	1	10" DIAMETER X 2" HIGH	1
35	21 LBS	4 / 33.8"	1	2	1	10" DIAMETER X 2" HIGH	1
47	27 LBS	4 / 45.6"	1	4	1	14" DIAMETER X 2" HIGH	2
59	33 LBS	4 / 57.4"	1	4	1	14" DIAMETER X 2" HIGH	2
79	44 LBS	6 / 77.1"	3	6	3	3x 10" DIAMETER X 2" HIGH	3
98	54 LBS	8 / 96.8"	4	8	4	4x 10" DIAMETER X 2" HIGH	4
118	64 LBS	10 / 116.5"	5	10	5	5x 10" DIAMETER X 2" HIGH	5
158	85 LBS	12 / 155.8"	6	12	6	6x 10" DIAMETER X 2" HIGH	6
197	105 LBS	18 / 195.2"	6	12	6	6x 10" DIAMETER X 2" HIGH	6

NOTES Canopy mounts over 4x4 octagonal j-box (by others.) cord is white. Cable and cords are field cuttable to adjust OAH. Bullet style ceiling couplers are provided and mount by utilizing 1/4-20 threaded rod (by others) or screw (by others) through coupler. When remote driver is specified, a 5.3" diameter x .8" high canopy is supplied (instead of the larger integral driver canopy.) Remote enclosure: contact factory for sizes and options. Rings with multiple sections are joined together in the field.